



Double-sided  
'FT' Keys are  
standard



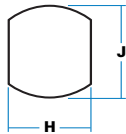
9/01875

**ORDERING CODE**

9/01875	Turnbutton, chrome, LH
9/01875B	Turnbutton, black, LH
9/00078	Connecting link rod, 1-metre
3/13390	Connecting clip
9/00138	Recess pan, black
5/00939	Gasket for recess pan

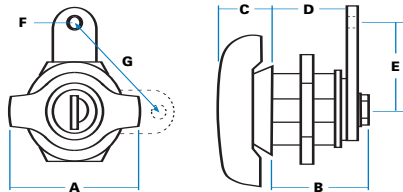
**Panel-piercing detail**

This larger aperture also suits our 'easy-fix' range of 'L' & 'T' handles



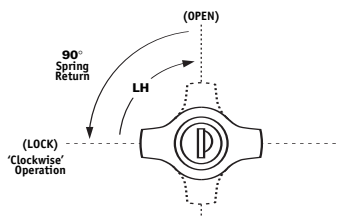
<b>H</b>	Piercing across flats	22 mm
<b>J</b>	Piercing, diameter	24 mm

**SPECIFICATION**



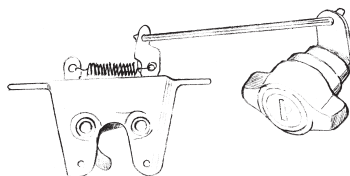
<b>A</b>	Face width	45 mm
<b>B</b>	Body depth	37 mm
<b>C</b>	Face height	14 mm
<b>D</b>	Depth to drive plate	30 mm
<b>E</b>	Height to hole	20 mm
<b>F</b>	Hole size	(dia) 4 mm
<b>G</b>	Travel (max)	25 mm

**DIRECTION OF MOVEMENT**



Lock turns 90° in a clockwise direction, and is returned to horizontal by spring-action. It will only lock in the 'rest' position.

**APPLICATION SCHEME**



'Turnbutton' can be connected to operating trigger on our 'claw' latches (9/00283, etc.)

**'TURNBUTTON'  
REMOTE- ACTION  
LOCK UNIT  
(SPRING-RETURN)**

A very low profile design with spring return, used to operate a latch or mechanism which is mounted remote from the lock itself. It has been widely used as a vehicle boot (trunk) and tailgate lock.



Turn lock through 90° LH to rotate drive plate and operate attached linkage. Spring returns turnbutton to horizontal position. Key turns through 180° to prevent movement and withdraws in both positions.



Insert from front into pierced aperture and fix with large hexagonal nut. Neoprene gasket and stainless spring washer provided.



FT' keys as standard with 'shuttered' keyway. Optionally 'FS' or 'DLP' key types.



Bright chromium-plated or black powder-coated.



- Drive plate length/orientation
- 2-way connecting plate
- Can be used with our 'claw' and 'rotary' latches, or 'intermediary' unit, 1/29736.

**FULLY FLUSH-MOUNTING**



Where surface projection is not desirable the 'turnbutton' can be fitted into our steel recess pan to provide a totally flush-mounted lock.

