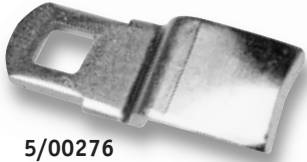


**Cam-form bars**



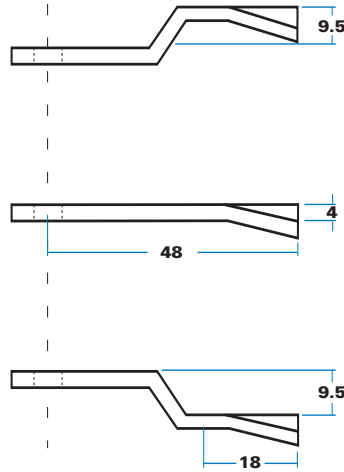
5/00276



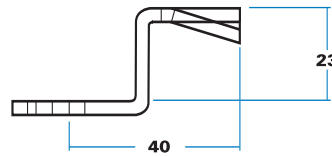
5/00275



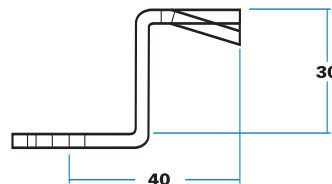
5/00097



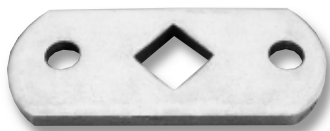
5/02706  
Raised 23mm



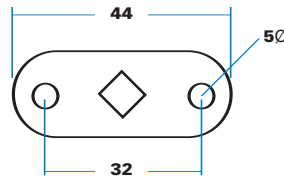
5/02721  
Raised 30mm



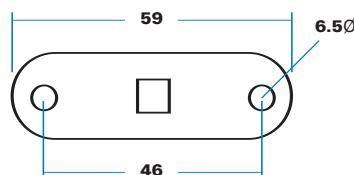
**Two-point bars**



5/00508 (illustrated)  
5/01911 with in-line square



5/00789 (illustrated)  
5/01389 with square at 45° to centre line

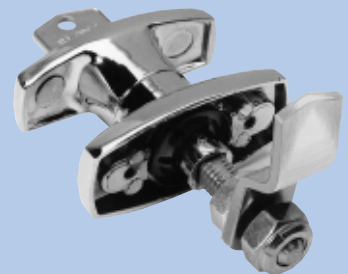


# NEW

## CAM-FORM & MULTI-POINT LATCH BARS

These bars are in 3 mm-thick mild steel, zinc-plated with 8 mm-square hole. Cam-form types have a 4 mm 'leading edge' for good engagement. They can be used with most of our compartment locks, 'Compact' and 'Turnbutton' models, and also with handles having 8 mm square shaft, as illustrated below.

## Latch bar fitted to locking handles



The 8 mm shaft is threaded M10 so that square form is retained. Bar can be adjusted using nut (MP00221) and locknut (MP00220) illustrated

