



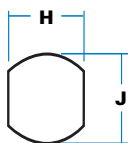
Double-sided 'FT' keys
as standard



9/01930

ORDERING CODE

- 9/01930** Low-profile lock, 90°, mixed keys
- 9/01930/01** Low-profile lock, 90°, FT 111
- 9/01931** Low-profile lock, 180°, mixed keys
- 9/01931/01** Low-profile lock, 180°, FT 111

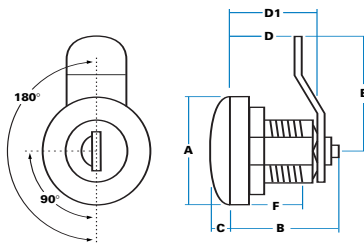


'Type 2' piercing
This larger aperture
also suits our 'easy-
fix' range of handles.

G Diecast spacer (depth)	6 mm
H Piercing, across flats	22 mm
J Piercing, diameter	24 mm

Latch bar reversible, can be fitted at 45° intervals.

SPECIFICATION



A Head diameter	30 mm
B Total depth	29 mm
C Head projection	5 mm
D Depth to cranked latch	15 mm
D1 Body depth	22 mm
E Height of bar	37 mm
F Thread depth	17 mm



90° or 180° rotation as shown. Key will withdraw in unlocked (9 o'clock) position with 90° models.

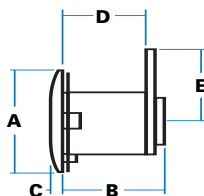
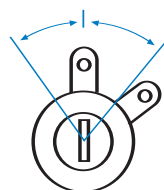


'FT' keys as standard with 'shuttered' keyway. Optionally 'FS', '92' or 'DLP' keys.



Wide choice of latch bars, finish options. Special key numbers or sets.

7/24385 Spring Fixing clip
(supplied with locks)



1/29400-1
(Supplied as pairs)



ORDERING CODE

- 1/29400-1** 'Private' locks, LH/RH pair, complete with spring clip.

Request engineering drawing for panel cut-out dimensions.

SPECIFICATION

A Head diameter	30 mm
B Total depth	33 mm
C Head projection	2 mm
D Depth to bar	25 mm
E Height to hole centre	16 mm



Key enters and withdraws vertically with 'lost motion' allowed, and 45° movement of bar to each side of rest position.



Mount in special pierced aperture and secure from inside with spring clip. Gasket provided.

**VEHICLE
'PRIVATE' (DOOR)
LOCKS**

Used with non-locking exterior handles (see B25), these locks have very low profile and twin-lobed operating bar. Supplied as pairs, LH/RH, chromium-plated, 'FT' keys only.