



**9/01605**  
Stainless 'L' Handle with  
WBH escutcheon &  
8mm shaft

**9/01615**  
Stainless 'T' Handle  
with WBH escutcheon &  
8mm shaft

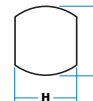
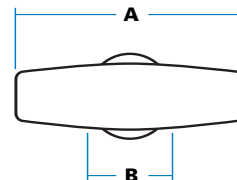
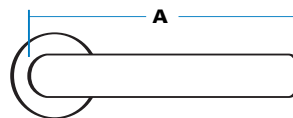
## STAINLESS STEEL HANDLES WITH 'EASY-FIX' MOUNTING

These 'L' and 'T' handles have similar dimensions to our diecast range, with the same 'easy-fix' mounting through a standard panel piercing. However, they are made completely in 300 series stainless steel for corrosion resistance and good appearance.

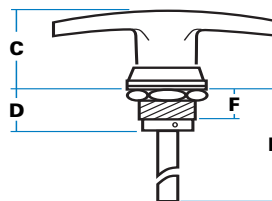
### ORDERING CODE

With WBH Escutcheon & shaft	
<b>9/01605</b>	Stainless 'L' handle
<b>9/01615</b>	Stainless 'T' handle
With WBH Escutcheon & latch bar	
<b>9/01600</b>	Stainless 'L' handle
<b>9/01610</b>	Stainless 'T' handle
With 'EMKA' Escutcheon & shaft	
<b>9/01606</b>	Stainless 'L' handle
<b>9/01616</b>	Stainless 'T' handle
With 'EMKA' Escutcheon & latch bar	
<b>9/01601</b>	Stainless 'L' handle
<b>9/01611</b>	Stainless 'T' handle

### SPECIFICATION



Panel-piercing detail (WBH)



<b>A</b> Handle length ('L')	112 mm
<b>A</b> Handle length ('T')	80 mm
<b>B</b> Face width (escutcheon)	30 mm
<b>C</b> Face height	35 mm
<b>D</b> Body depth	18 mm
<b>E</b> Total projection (shaft length)	63 mm
<b>F</b> Depth of thread	10 mm
<b>H</b> Piercing across flats	22 mm
<b>J</b> Piercing, diameter	24 mm

Note: Dimensions of 'EMKA' escutcheon and panel piercing differ from above.



'T' handle with fitted latch bar  
**9/01610**

'T' handle with fitted latch bar This model has a stainless latch bar (as 5/00097) with 10mm 'crank', fitted directly to the rear of the handle casting.

**!** Satin-finished handles with 8mm stainless steel shaft, or with directly-fitted latch bar. Fixing escutcheon to either WBH standard, or to fit 'EMKA/DIRAK' style piercings.

**↕** 180° Movement against stops.

**≡** Mount through panel piercing against 'flats' on escutcheon and secure with large stainless nut. Neoprene gasket and stainless spring spacing washer are provided.

**🔧** Satin-finished as standard.

**?** - Shaft lengths  
- Threaded shafts (M10)  
- Semi-recess fitting for 'T' handles using 9/00138SS pan.

