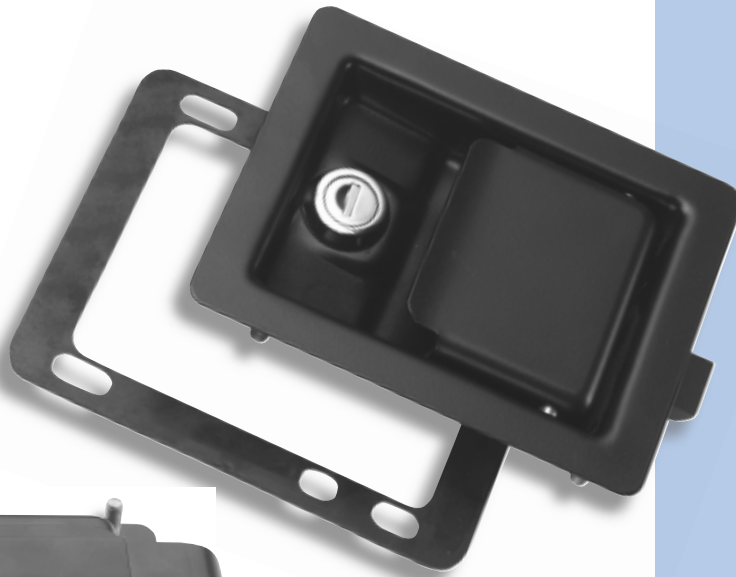
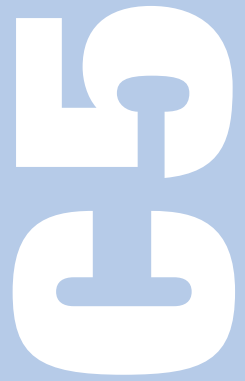


9/00460B
(locking)



The 'Paddle' concept provides an attractive, fully self-contained lock/latch, which is flush fitting and simple to install

'PADDLES' SLAM-BOLT OPTIONS

Many design options are available with 'paddle' latches. This page shows some of the special features available for slam-bolt models.

Blind-mount models :

ORDERING CODE

Mild steel models, blind mounting (& gasket)

9/00460	Slam-bolt paddle, locking
9/00460B	As above, black
9/00460/01	As 9/00419, FS880 standard keys
9/00460B/01	As above, black
9/00461	Slam-bolt paddle, non-locking
9/00461B	As above, black

Stainless models, blind mounting (& gasket)

9/00470	Slam-bolt paddle, locking
9/00470/01	As 9/00418, FS880 standard keys
9/00471	Slam-bolt paddle, non-locking

Padlockable paddles

The loop has 10mm aperture and is made in double-section stainless steel for strength and scratch resistance. It can be added to almost any of our standard 'paddle' models.

To order, add the suffix "/PL" to our regular part numbers.



Blind-mounting, with four studs (M6 x 15mm) welded on inside rim. Consult engineering drawing for position of studs (not same as pierced holes).



Alternative key types ('FT' double-sided keys), '92' series, etc. - Tool-operated plug (triangular, square-drive, etc) - Padlockable loop in flap as shown.



Black powder-coated, or other colours as specified.



'Deadbolt' locking; with this option the flap & bolt are held rigid when key cylinder is locked, and the latch will not slam. This feature eliminates any possibility of a door being secured by accident.



Alternative slam bolts (length, nose-form) - Weathershield fitted to lock cylinder - Inside release knob as shown.

SPECIFICATION

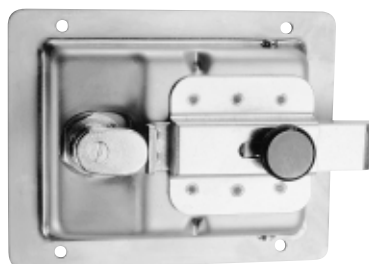
Blind-mounting models have four studs (M6x15mm) welded on inside rim. Consult engineering drawing for position of studs (not same as holes).

Recommended maximum torque for securing weld-studs is 4.5Nm (3.3ft. lb)

Panel-piercing

See page C10 for details of panel cut-out required

Inside release option



A knob for inside release can be fitted to all slam-bolt models. This operates even when paddle has been locked from outside
Add suffix "/IR" to part number

2-way paddle system

