



**9/00492**  
Rotary latch



**9/00426**  
Striker plate

**ORDERING CODE**

**Stainless models, pierced rim (& gasket)**

**9/00492** Rotary-latch paddle, locking

**9/00493** Rotary-latch paddle, non-locking

**Mild Steel models, plain rim (& gasket)**

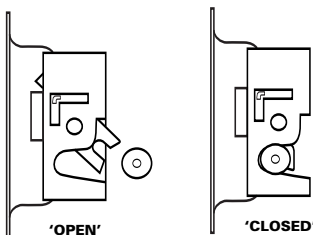
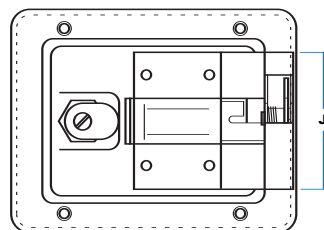
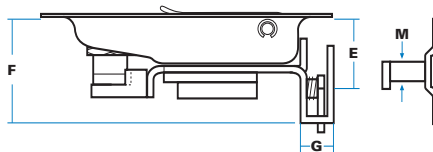
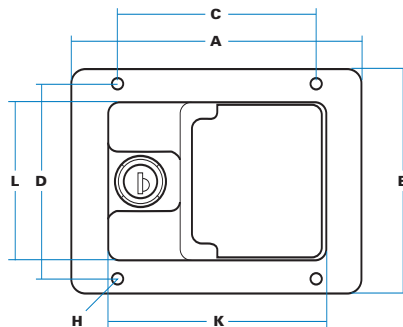
**9/00490** Rotary-latch paddle, locking

**9/00491** Rotary-latch paddle, non-locking

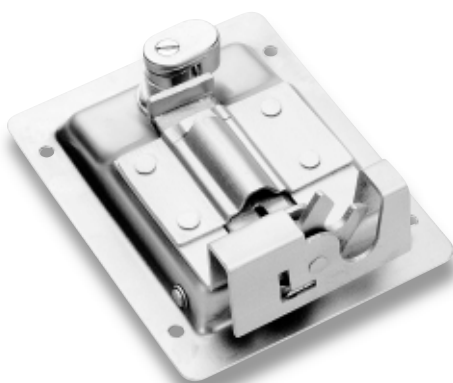
**9/00426** Striker plate

Consult sales office for 'blind-mount' models

**SPECIFICATION**



Rear-view shows paddle with built-in latch and hardened steel "claw" in open position.



|  |       |
|--|-------|
| <b>E</b> Depth to pin centre                     | 30 mm |
| <b>F</b> Max. Depth                              | 48 mm |
| <b>G</b> Width of latch body                     | 16 mm |
| <b>J</b> Length of latch body                    | 70 mm |
| <b>M</b> Striker pin diameter                    | 10 mm |
| <b>N</b> Striker hole centres                    | 40 mm |
| All other dimensions as for standard paddle case |       |

The 'Paddle' concept provides an attractive, fully self-contained lock/latch, which is flush fitting and simple to install

**'PADDLES'  
WITH 2-STEP  
ROTARY LATCH**

The advantage of this new design is that the built-in rotary latch provides very positive slam-action and anti-burst protection, which prevents accidental opening through vibration or impact. Ideal for large mobile items of plant and equipment but not suitable for vehicle personnel doors.

**!** Exceptionally smooth action, strong return spring on flap to prevent rattle, hardened steel 'claw' and heavy-duty locking cam on key cylinder.

**W** 'Claw' slams against striker pin, and is released when paddle flap is lifted.

**U** 2-stage closing action of 'claw', which is completely blocked when key is turned to locked position. Cannot be locked when claw is in 'open' position. Non-handed, can be reversed.

**M** Stainless models have pierced rim as shown, or internal welded studs. Mild steel models have plain rim (for weld-on) or studs. Gasket supplied.

**K** 'FS' as standard, optionally 'FT', '92', or 'DLP' key types. Non-locking models are available.

**P** Polished stainless steel, or mild steel, bright zinc-plated. Optionally, black powder-coated finish.

**M** With stainless models, case and flap made in Grade 304. All other components mild steel, with diecast cylinder and locking cam.

**£** Highly competitive against market alternatives.