

9/00756
(RH)

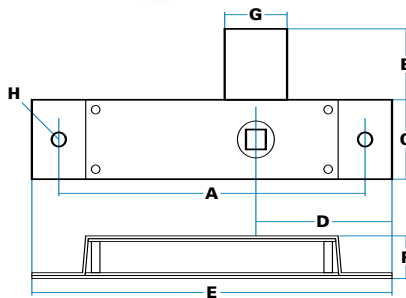
ORDERING CODE

9/00755 Large budget latch, LH

9/00756 Large budget latch, RH

SPECIFICATION

A Hole Centres	108 mm
B Bolt Height	25 mm
C Case Width	28 mm
D Location	48 mm
E Case Length	127 mm
F Case Depth	15 mm
G Location	22 mm
H Hole Sizes (Diameter)	Ø 5 mm



LARGE BUDGET LATCHES

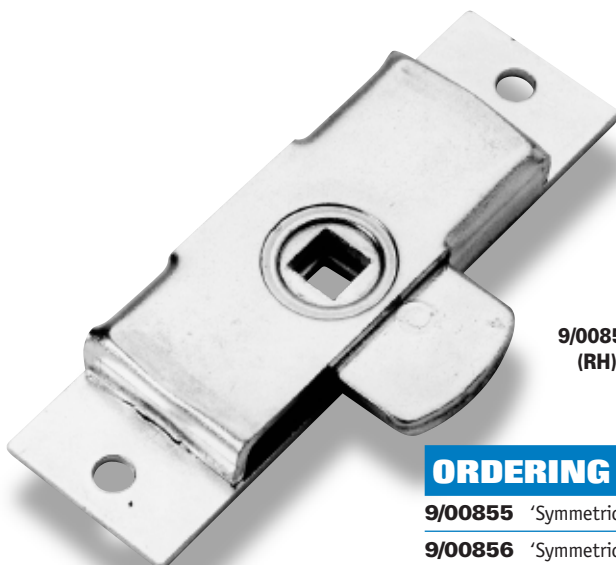
With exceptionally strong construction, this model suits heavy applications and where a stronger, more substantial bolt is required to resist abuse. Uses include large storage containers, bus engine and luggage compartments.

! Very substantially constructed with 3mm steel plates for full length of latch, four steel pillar rivets to prevent 'bowing' and distortion, and forged 8 mm brass bolt.

↕ 'Handed' for 90° operation, LH/RH as shown operated by standard 8mm square follow bush.

⚙ Fixing through 5mm holes. These can be enlarged or countersunk to special order.

🔧 Yellow zinc-plated, with chemically-blackened spring.



9/00856
(RH)

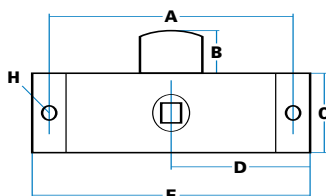
ORDERING CODE

9/00855 'Symmetrical' budget latch, LH

9/00856 'Symmetrical' budget latch, RH

SPECIFICATION

A Hole Centres	86 mm
B Bolt Height	15 mm
C Case Width	28 mm
D Location	51 mm
E Length	98 mm
H Hole Sizes (Diameter)	Ø 5 mm



'SYMMETRICAL' BUDGET LATCHES

All-steel latches, with bolt centred in case for symmetrical operation. Movement 90°, LH or RH, with bolt held positively by a concealed spring. Finish is clear zinc plated.

⚙ Fixing through 5mm holes. These can be enlarged or countersunk to special order.

🔧 Yellow zinc-plated throughout.