



MOULDED SLAM LATCHES

The unique design of these latches allows 'fix through' mounting to suit narrow door pillars, sections and channels. Moulded construction provides the benefits of lightweight, self-lubricating action, and total corrosion resistance at an inexpensive price.



Basic Latch (9/01530) is operated by rod or cable as part of a slam system. Single-point models use a large knurled knob for good grip.



Slam bolt retracts fully into case when operated. Slotted bolt-pull provides 'lost-motion' so latches can always be slammed, even when a system is in 'locked' mode.



Fixing by rivets through 6mm holes in case. Use large-headed fasteners to spread load over area.



Latches are self-coloured black with attractive textured finish.



Moulded in acetal copolymer, with stainless steel spring.



Tooling allows special bolt nose shapes to be made, subject to economical minimum batches.



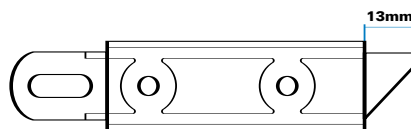
Cycle Testing: The slam latch 9/01530 was tested to over 50,000 cycles of slam and withdrawal with no appreciable wear to bolt-nose or bolt-pull.



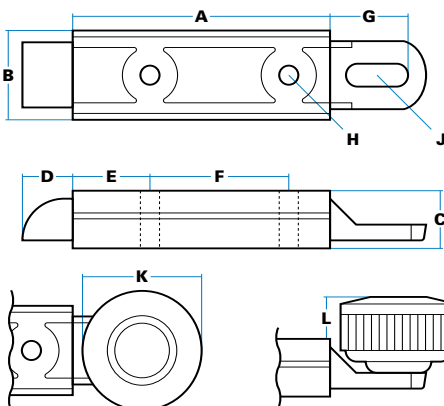
Highly competitive against market alternatives.

ORDERING CODE

- 9/01528** Moulded slam latch, reversed knob
9/01529 Moulded slam latch, pull-knob fitment
9/01530 Moulded slam latch



Special model with side-action bolt, suitable for roller shutters, etc.



SPECIFICATION

A Body Length	80 mm
B Body Width	29 mm
C Body Height	18 mm
D Bolt Projection	16 mm
E Location	23 mm
F Location	44 mm
G Location	25 mm
H Hole Diameter	∅ 6 mm
J Slot Dimension	7x20 mm
K Knob Diameter	∅ 38 mm
L Knob Height (max)	16 mm
Spring pressure: 6kg to full bolt withdrawal	

Note: Knob & rivet can be supplied loose, for assembly after latch is installed in panel.

