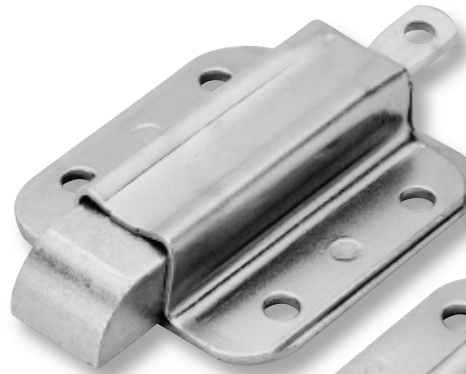


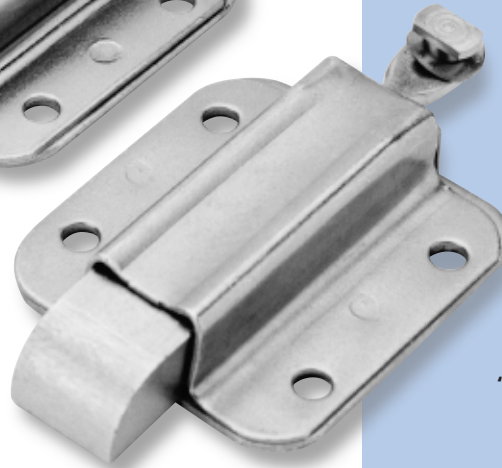


END-SLAM LATCHES (END BOLTS)

Precision-made latches which have become motor-industry 'standards', with solid, machine-cut steel bolts and 'quick-fit' attachment point if desired. Adjustable bolt-pull allows bolt projection to be varied, and bolts are reversible to 'nose-up' position. Stainless steel models available.



3/22387 with plain bolt-pull



3/22386 with 'quick-fit' attachment point

3/22388 'Nose-up' bolt allows use on inward-opening doors



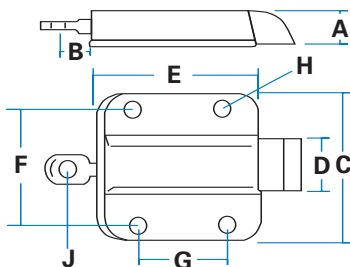
ORDERING CODE

3/22386	End latch, nose-down, 'quick-fit' pull
3/22387	End latch, nose-down, plain pull
3/22388	End latch, nose-up, plain pull
3/22389	End latch, nose-up, 'quick-fit' pull
3/22392	End latch, special (non-reversible)
9/01187	Stainless steel latch (as 3/22387)
3/22384	Packing plate

SPECIFICATION

A	Bolt Thickness	13 mm
B	Bolt Pull	13 mm
C	Width	57 mm
D	Bolt Width	19 mm
E	Body Length	62 mm
F	Hole Centres	44.5 mm
G	Hole Centres	33 mm
H	Hole Diameter	Ø 5.5 mm
J	Hole Diameter	Ø 5 mm

Bolt projection variable, 9-16 mm.
Minimum load 5kg for full bolt travel.
Mild steel model made in CR4.
Stainless models in grade 304 with stainless bolt-pull, bolt and spring.



Spring-loaded slam latches, normally used as part of a 2-way or 3-way system.

Bolt retracts fully into case either by slam-action or by withdrawing bolt-pull.

Four holes, 5.5mm dia, through both thicknesses of material. A packing plate is available (3/22384).

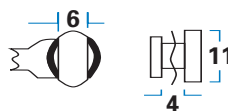
Yellow zinc-plated finish on mild steel models. Stainless steel models supplied in mill-finish, can be polished as an option.

T Bolt spring pressure is 6kg (14lbs)

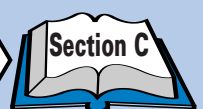
? Bolt length can be varied and bolt-nose cut to special profiles. Model 3/22392 has off-centre pull and special non-reversible bolt.

Detail of 'quick-fit' attachment.
The cropped rivet allows fast attachment of link bar as shown. A wave washer prevents rattle and excessive 'play'.

Suggested link bar 3/12497, length 915mm.
Linkage bar is pierced to accept rivet and allow 22mm free movement.



2-way and 3-way slam-systems



Striker Plates

