

Detailed view of 'star wheel' area.

## SUPPORT STAYS 'STAR-WHEEL' RELEASE

This range of extensible stays provides a simple, inexpensive and long-lasting method of supporting top-hinged doors and hatches. The 'star-wheel' design allows automatic release - useful where two stays are fitted on a very wide panel. Many options are available.

### ORDERING CODE

**7/03098** Stay, 290/495 mm, 2 brackets

**7/03099** Stay, 290/495 mm, bottom bracket only

**9/00557** Stay, 290/495 mm, no brackets

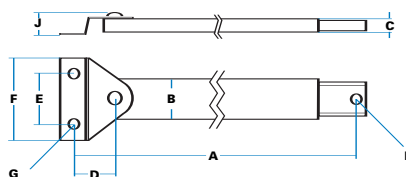
**9/00006** Stay, as 7/03099, with thumb-screw



#### Thumb-screw fitment

A weld-nut is fitted in the outer slide, so that the thumb-screw can be tightened, thus locking the stay at any intermediate position.

### SPECIFICATION



<b>A</b> Length between centres, closed	290 mm
extended	495 mm
<b>B</b> Max. Width (outer)	25 mm
<b>C</b> Max. Depth (outer)	12 mm
<b>D</b> Location (bottom)	28 mm
<b>E</b> Hole centres	35 mm
<b>F</b> Bracket width	57 mm
<b>G</b> Hole sizes (diameter)	9 mm
<b>H</b> Hole size (diameter)	6 mm
<b>J</b> Bracket height	14 mm

Note: Standard bracket shown is 7/03094, full dimensions on page C16



Stay extends as door is opened, and locks in the extended position. It is automatically released by a further slight extension, allowing unit to be closed.



Clear zinc-plated. To special order, yellow passivate or black zinc-plated.



Standard brackets (7/03094) as illustrated for plant-on fitting.



Mild steel throughout



7/03099 is a direct alternative to Jagger 2522/001



- Special lengths
- Alternative brackets
- Thumb-screw fitment (illustrated)
- Weld-studs on stay sections for concealed fixing

Alternative  
Brackets

E14