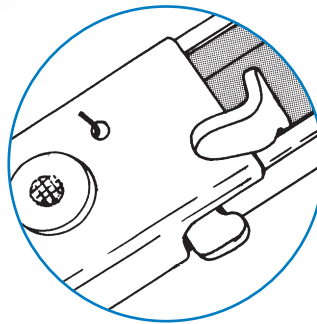


7/25621/08

7/25621



Detailed view
of safety
catch area

SUPPORT STAYS 'SAFETY CATCH' RELEASE

The standard models illustrated are representative of a family of stays for top-hinged doors and hatches. The 'safety-catch' design means the stay must be manually released - a useful precaution against vibration or accidental closure.

ORDERING CODE

7/25621 Stay, 285/470 mm, 2 brackets

7/25621/08 Stay, 285/470 mm, with base bracket (7/03094) special.

7/35838 Stay, 340/585 mm, no brackets

7/35838/01 Stay, 340/585 mm, with base bracket (7/03094) only.

7/35839 Stay, 210/335 mm, no brackets

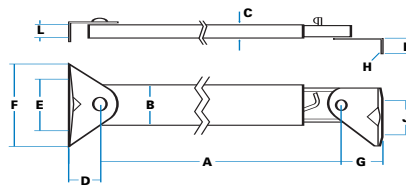
7/35843 Stay, 285/425 mm, no brackets

7/35864 Stay, 340/530 mm, no brackets

Note: Standard brackets shown are 7/09514 (top) and 7/21194 (bottom). Bottom bracket has radiused base and elongated fixing holes for adjustment.

When supplied without brackets, top & bottom sections have mounting holes at 6mm diameter

SPECIFICATION



(Standard model 7/25621 shown)

A Length between centres, closed	285 mm
extended	470 mm
B Max. Width (outer)	25 mm
C Max. Depth (outer)	12 mm
D Location (bottom)	23 mm
E Hole centres (bottom)	32 mm
F Bracket width (bottom)	57 mm
G Location (top)	23 mm
H Hole sizes (diameter)	5 mm
J Hole centres (top)	19 mm
K Location (top)	9 mm
L Location (bottom)	13 mm



Stay extends as door is opened, and locks in the extended position. The safety catch must be depressed manually before it will close.



Clear zinc-plated. To special order, yellow passivate or black zinc-plated.



Standard brackets as illustrated for plant-on fitting.



Mild steel throughout



- Special lengths (see models listed)
- Alternative brackets
- Weld-studs on stay sections for concealed fixing.

Alternative
Brackets

E14