

9/01824
RH illustrated



9/01825 (LH)

9/01824 (RH)

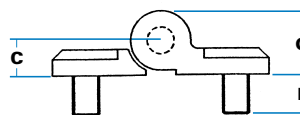
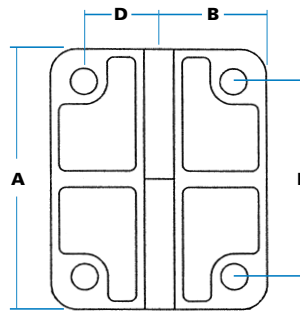
LIFT-OFF CONCEALED-FIX DIECAST HINGES - BLACK OR CHROMIUM PLATED

Lift-off hinges providing improved appearance and greater security by use of concealed fixing studs, secured from inside. These are robust hinges intended for large enclosure doors, interior or exterior use. Left-hand and right-hand.

ORDERING CODE

- 9/01824 Concealed fix hinge, RH, black
- 9/01825 Concealed-fix hinge, LH, black
- 9/01822 Concealed-fix hinge, RH, chrome
- 9/01823 Concealed-fix hinge, LH, chrome

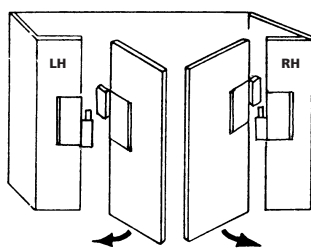
SPECIFICATION



A Length	80 mm
B Width (half)	32.5 mm
C Height to pin	10.5 mm
D Location to axis	22.5 mm
E Mounting centres	60 mm
F Stud dimensions	M8 x 15 mm
G Height	19.5 mm

Pin diameter 8 mm, projecting 25 mm above face of lower hinge section.

Explanation of 'handing'



(two hinges should be fitted to each door)

Angle of opening

Hinges will open fully forward to 180°, backward to 45° from horizontal.



Doors lift-off fixed pin in bottom half of hinge. Use LH and RH together (opposed) when door is required to be permanently fixed.



Fixing by two threaded studs M8 x 12 mm, cast-in each leaf.



Black powder-coated finish.



Zinc alloy diecast, with 8 mm stainless steel pin.



Rig-tests show that two hinges (on a 1-metre frame) carried a load of 100 kg (220lb) without damage, equivalent to a moment of force of 100NM (5.87KN)



Highly competitive against market alternatives.

Stainless
Models

