

**'Medium' & 'Large'
Block Hinges**
(Two tapped holes in
each block for mounting)

3 E

DIECAST 'BLOCK' HINGES FOR OFFSET DOORS

Medium & Large sizes

'Block' hinges are a neat, convenient method for hanging externally-fixed doors on metal cabinets, electrical enclosures, etc. Non-handed, the upper part simply sits onto a fixed steel pin. (Oppose hinges for when door is permanently fitted).

ORDERING CODE

'Medium' (76 mm) hinges (2 holes)

1/26750 raw finish

1/26915 chrome finish

1/26915B black finish

'Large' (100 mm) hinges (2 holes)

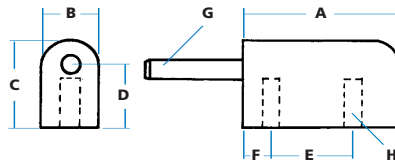
9/00838 raw finish

9/00839 chrome finish

9/00840 black finish

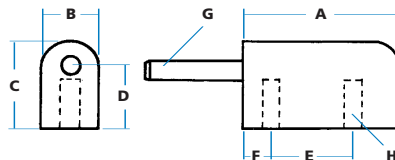
Note: Add 'SS' to order code to specify stainless pin on 76 mm models.

SPECIFICATION



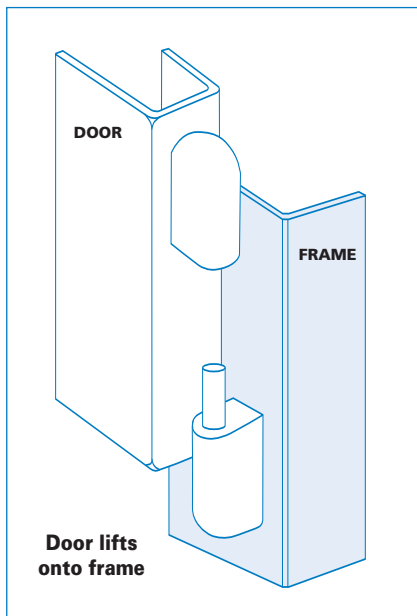
'Medium' (76mm) hinges

| | |
|------------------------|-------------|
| A Length (half) | 38 mm |
| B Width | 17 mm |
| C Height | 19 mm |
| D Height to pin | 11 mm |
| E Location | 19 mm |
| F Location | 9 mm |
| G Pin diameter | 6 mm |
| H Hole size | M6 x 7.5 mm |



'Large' (100mm) hinges

| | |
|------------------------|------------|
| A Length (half) | 50 mm |
| B Width | 19 mm |
| C Height | 28 mm |
| D Height to pin | 19 mm |
| E Location | 25 mm |
| F Location | 13 mm |
| G Pin diameter | 8 mm |
| H Hole size | M8 x 13 mm |



Bottom half of hinge contains a fixed steel pin and is fitted to door frame. Top half is fitted to door edge and is lifted on (and off) pin. Movement is completely free.



Chromium-plated, black powder-coated or raw metal for painting after assembly.



Plant-on fitting, with two tapped holes in each half.



Zinc diecast, with mild steel pin, zinc-plated on 76mm models. Stainless pin as standard on 100 mm Models.

for
flush
doors

