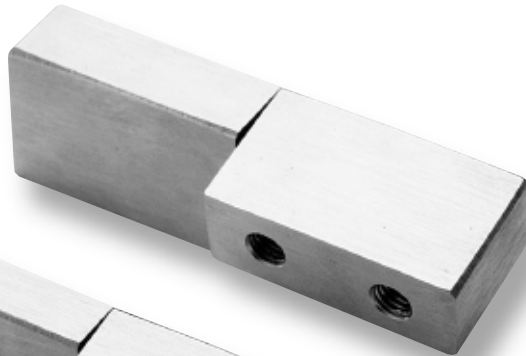
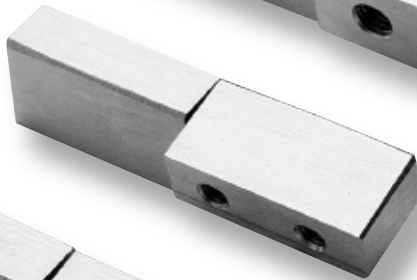


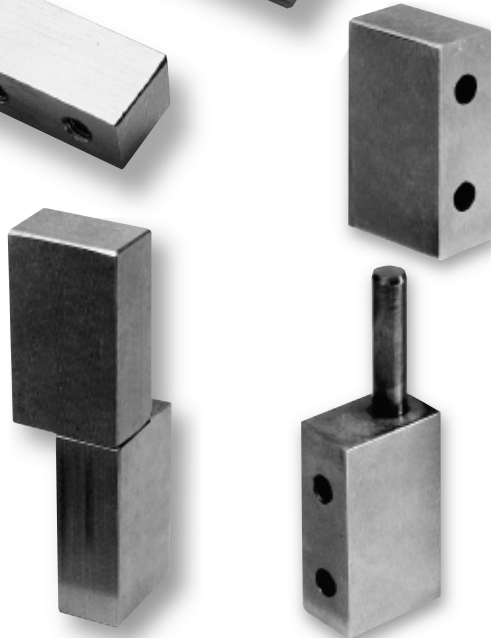
Large
(100 mm hinge)



Medium
(76 mm hinge)



Small
(60 mm hinge)



STAINLESS 'BLOCK' HINGES FOR OFFSET DOORS

These machined block hinges suit high-quality cabinets and enclosures, where stainless steel fittings are required to prevent problems with corrosion, staining and binding-up, which can occur in damp or chemically-active environments.

Produced in three standard sizes, the hinges have a ground satin finish and are lubricated with light oil for smooth action. They are exact alternatives to our diecast 'block' hinges

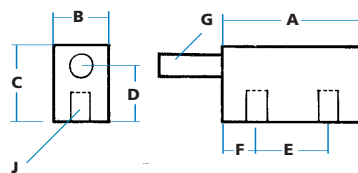
ORDERING CODE

9/01289 Stainless block hinge, 60 mm

9/01290 Stainless block hinge, 76 mm

9/01291 Stainless block hinge, 100 mm

SPECIFICATION



All corners have a radius and edges are chamfered.

60 mm 76 mm 100 mm

A Length (half)	32 mm	38 mm	50 mm
B Width	13 mm	13 mm	18 mm
C Height	16 mm	19 mm	29 mm
D Height to pin	9.5 mm	13 mm	20 mm
E Location	16 mm	19 mm	25 mm
F Location	8 mm	9 mm	13 mm
G Pin diameter	6 mm	6 mm	8 mm
H Hole sizes	6 mm x M5	7.5 mm x M6	13 mm x M8



Bottom half of hinge contains a fixed stainless pin and is fitted to door frame. Top half is fitted to door edge and is lifted on (and off) pin. Movement is completely free.



Ground, satin finish with chamfered edges. Bright-polished to special order.



Plant-on fitting, with tapped holes in base.



Stainless steel to Grade 303 throughout.



Special lengths using standard 'block' dimensions

