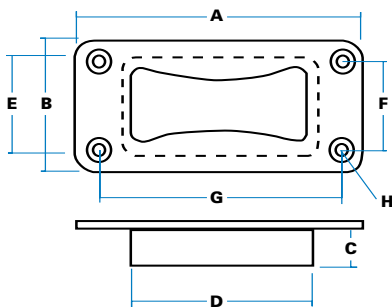


**9/01390**  
Grab Handle

**ORDERING CODE**

**9/01390** Recess grab handle, moulded

**9/01391** Recess grab handle, diecast



**SPECIFICATION**

<b>A</b> Length (outer)	133 mm
<b>B</b> Width (outer)	60 mm
<b>C</b> Depth	21 mm
<b>D</b> Length (inner)	95 mm
<b>E</b> Width (inner)	45 mm
<b>F</b> Hole centres	41 mm
<b>G</b> Hole centres	114 mm
<b>H</b> Hole sizes (diameter)	6 mm, c/s 10 mm

**Note:** Because of construction detail, there are projections on dimension 'D' to 115 mm on diecast model.

**DOUBLE-SIDED  
FLUSH-FIT  
GRAB HANDLES**

This design is available in both diecast and moulded construction. It is completely flush-fitting and easy to fix into panel aperture. The shaped edges allow easy action with roller shutters and sliding doors. Use the diecast version when handle is used to lift heavy equipment.



Fix through countersunk holes in top plate.



Diecast handle is black powder-coated, moulded handle has textured finish.



Diecast in zinc alloy, or moulded in glass-filled nylon with top and bottom plates ultrasonically welded together.

**WINDOW-PULL  
HANDLE  
(CONCEALED-FIX)**

This useful handle is used for pull-open windows in buses and coaches, and similar applications. It is fitted to the inside of the glass and is held by two bolts from outside, secured into hidden nuts contained in 'pockets' within the handle.

**Note:** Some restrictions on availability may apply

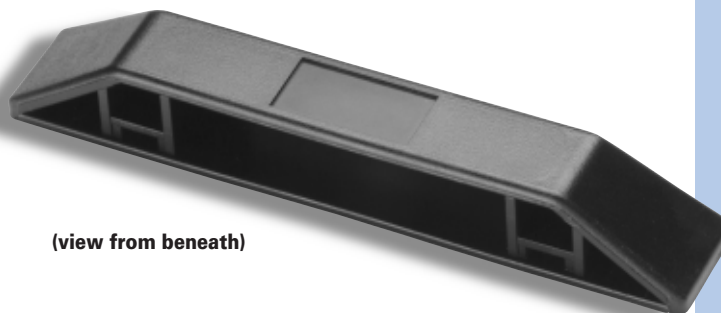


Secure from outside through two holes in base of handle, into 11mm 'nut pockets'



Moulded in high-impact ABS with fine textured finish.

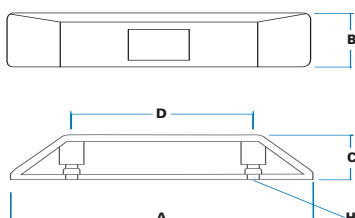
**9/01388**  
Window-pull handle  
(front view)



(view from beneath)

**ORDERING CODE**

**9/01388** Window-pull handle



**SPECIFICATION**

<b>A</b> Length	200 mm
<b>B</b> Width (max)	35 mm
<b>C</b> Depth	30 mm
<b>D</b> Hole centres	120 mm
<b>H</b> Hole sizes (dia)	8mm

**Note:** Nut 'pockets' are 11 mm max. width