



9/01228
Hand-hold in 'forward' mode, suitable for gantries, platforms, high-access doors, as a grab for standing passengers, machine covers and roller-shutters.

**'FOAMED'
STEEL-CORED
'HAND-HOLD'
150mm**

This unique design complements our range of larger "foamed" grab rails, but is suited to more restricted spaces. It makes an ideal alternative to traditional "6-inch" pulls, with textured, resilient surface, great strength, and a shape that lends itself to fixing in several modes as illustrated.

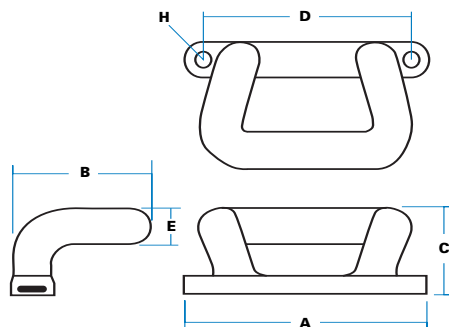
ORDERING CODE

9/01228 Hand-hold, black
9/01228/01 Hand-hold, red RAL3020

SPECIFICATION

A Body Length	175 mm
B Body Width	100 mm
C Body Height	66 mm
D Hole centres	151 mm
E Cross section	25 mm
H Hole sizes (core)	7 mm

10 mm steel rod reinforcement core
Plug diameter 15 mm accepting bolts to 12 mm head diameter x 7 mm shank.
Plug ref. 5/00538 (specify colour)



Hand-hold in reverse-mode: suitable for seat backs, trays and containers, trailers and caravans, marine applications.



- !** Resilient, padded surface. No sharp edges, for maximum safety. Triangular section for good grip. Mounting holes concealed by 'snap-in' plugs.
- 🔧** Attractive, textured finish. Standard colours are black and red, other colours can be moulded subject to batch-quantity requirements.
- 🔩** Fixing by bolting through holes in top rail (through steel core).
- M** Moulded in expanded polyurethane foam around welded steel former (core). Meets EC 95/28/CE regulation for combustibility (less than 100mm per minute).

T **LOAD TESTING:**
The handle was tested to destruction, with the following results:
Parallel to axis fixing, max load 14.84 Kilo-Newtons (1.51 tonnes)
Vertical to fixing, max load 13.77 Kilo-Newtons (1.4 tonnes)
With Ultimate strength over 1 tonne we recommend a safe working load of 500Kg (1100lbs) max.